

THE DAILY MOLEHILL

News on How the Godhead and The Entity Run The Port

We Are Not Sheep

"We understand that Sydney, Miami, even sordid Istanbul have dynamic cultural centers and interesting shopping around their cruise terminals," said the Joint Entity and Godhead Squad (JEGS) spokesman Joe Blow, "We are not sheep! We don't have to do it just because they do. An asphalt platz around the terminal is so New York. We thought an authentic city experience was the way to go."

The Puny Port Cultural group (PPCG) persists in trying to have this policy reassessed. We spoke with their harried director Constance Pushing on the scene. She seemed blind-sided by recent developments on the ground and articulated a chicken and egg thesis as to real estate's effect on PPCG size. "In NYC it's location, location, location."

"Once we have a solid commitment that we can operate here, the PPCG can rapidly grow its board, funding, and programs."

Economic Development On The Way!

The Entity is developing plans for how to deploy the unused waterspace in this port.

Word is that great progress has been made on internal discussions and interdepartmental turf battles. An RFP will be issued sometime next year to create a response

Round n Round

The Godhead has issued a new clear communications policy affecting the Puny Port Cultural Group running short-term programs that attract and stimulate economic activity on site and in the local area.

"We don't have a relationship with You, we don't want a relationship with You, and we don't want a relationship with Them either; so we propose that to talk to us, you talk to Them, and then we'll tell Them where to go. Ultimately, someone will get back to you. What do you mean you are trying to get something done, and what recession?"

Resting On Laurels

Capos from the Joint Entity and Godhead Squad (JEGS) were pleased a few years back when the port won awards for passenger and baggage handling. "We now plan to rest on our lau

plan to the economic recession currently nearing the end of its second year.

The results of that RFP will go into the hopper; and a second, follow-up RFP reflecting ideas from the first RFP (and elsewhere) will come out the year after that.



A family, with dad in wheelchair, schlepped out of the terminal to wait rather than endure the crush of the terminal pick up area. PPCG hopes to offer passenger amenities.

rels," said JEGS representative Merry Buttermilk.

"Why develop an adjacent cultural center with programs, tourist souvenirs, a café or additional seating and waiting areas, when we've got our awards? The most important thing is ensuring that our loading and unloading operations are not impacted in any way by any new ideas.

As to the Puny Port Cultural Group's idea of getting a ferry to connect this place to Manhattan, the bus and taxi congestion here is no where near as bad as in Manhattan, and we think the talk about traffic and carbon footprint is really overdone."

Inside this issue:

Profile of early port planner

Franz Kafka



Spokesman for The Entity Tony Goodfellow articulated aspects of the current policy, "Boat operators who have been trying to use this facility for several years will have to seek other venues while we figure out how to use this valuable and pivotal maritime asset. (cont'd)

Economic Development cont'd.

We don't want to act too rapidly in the face of this recession and get it wrong."

Ferry operators who are willing to pay landing fees are trying to parse the press release.

The policy regarding historic vessels remains unclear while one camp sees clear stimulus benefits from the visitation they bring, while the other camp thinks that the habit of making docks free to these ships, or even subsidizing their visits, looks foolish in comparison to paying rent for the space to the Godhead and keeping the pier empty.

"That policy offers consistency, continuity and predictability; and we always prefer that," added Goodfellow.

"That policy offers consistency, continuity and predictability; and we always prefer that," added Goodfellow.

Frank Sinatra's song "I'll do it my way" has been heard over the emergency broadcast system in some departments.

A Clean Sweep

A street sweeper cleans the bare parking lots every night before a cruise ship comes in.

Local residents are happy that someone's second cousin twice removed who used to live in the neighborhood knows the guy who got the contract.

Hopes are high that more work and benefits will come to the area thanks to the port development.

Several have asked the port Joint Entity and Godhead Squad (JEGS) if more could be done, especially in terms of attracting visitors to the area. "We don't clean the sidewalks and such right outside our gate," said JEGS spokesman Joe Blow, "does anyone even live out there anyway?"

The Puny Port Cultural Group started a street cleanup effort and found some resistance from locals. "Don't the Big Guys have money to do this?! Why should my garden center donate plants for treewells near the port? Sales are down thanks to this recession and heat," snarled one sweaty business owner during the hottest July on record.



Treewell on Pioneer Street

Safety Math

Addressing concerns about safety is always a top priority at the Godhead.

"We installed 200-pound-test fence anchors on our new waterfront fence and 22,78935-pound-test snow fencing on those anchors," said the head of the Risk Squad Gerry Rigg. "Size does matter," he added "and the bigger number always wins; this is a really powerful fence."

The water's edge was unfenced during two-plus years of public access without incident, so it is great news that Risk is now dealing with this issue. Rigg says

he is looking forward to submitting the bill for the fence to the Entity.



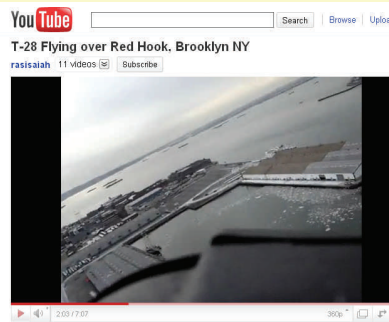
• Snow fence after a windy rainstorm

Up, up, and away

Popular airplane camera overflights conducted by a local hipster may replace the Godhead's helicopter patrols due to the recently announced closure of the Air Security Sector (ASS).

Local resident Harry Tizzwitt has been conducting port overflights with a model airplane carrying a \$400 camera.

The lanky twenty-some year old, who withheld his age for fear that he'll lose his street cred if people know that he's about to turn 30 said, "I'm thrilled to hear that their ASS will no longer be in



the air. Maybe I'll get some work with this cool rig I cobbled together."

The existing flight operations have been easy to implement as they are conducted without submitting ops plans, unlike the educational programs offered by the Puny Port Cultural Group.

Tizzwitt's aerial views of the port are available to all via YouTube.